

C.CRANE

**CCX**Mile



**Outdoor  
USB  
WiFi  
Receiver**

**QUICK START  
GUIDE**

PLEASE READ ALL INSTRUCTIONS COMPLETELY  
BEFORE USE AND SAVE THIS MANUAL FOR  
FUTURE REFERENCE

2019



## Antenna Safety Instructions

---



### *Before Use*



Please read these IMPORTANT SAFETY WARNINGS before use. It is important to read and understand all instructions.

#### **Lightning**

You may need to ground your antenna if you live in an area prone to lightning.

#### **Power Lines**

Never mount an antenna near power lines. If a power line falls and comes into contact with your antenna, **DO NOT TRY TO REMOVE IT**. Call your local power company.

#### **Wind**

Installing an antenna on windy days can be dangerous. Slight winds can create strong forces against the antenna equipment.

**If you have any doubts about your ability to install the antenna safely, please hire a licensed, bonded professional to do the work.**

C. Crane is not responsible or liable for damage or injury resulting from antenna installations.

---

1. Read and understand all safety and operating instructions prior to installing the antenna. Retain Instructions: The safety and operating instructions should be retained for future reference.
2. Water and Moisture: Coaxial sealant around openings and connections of device and antenna will prevent damage when used outdoors. Use device in a vertical position.
3. Never use a utility pole to mount the device and antenna or to use as a support. Never climb a utility pole.
4. Antenna installations can be dangerous because many times it involves the use of a ladder and a possible fall. Do Not install antenna on a wet, snowy or windy day or if a thunderstorm is approaching especially when on top of a building or ladder.
5. The antenna can be struck by lightning, which can be fatal. We recommend a licensed and insured installation by a qualified person.
6. In the event of storms, disconnect the antenna from your device. This will prevent damage caused by lightning.
7. The installation or dismantling of any antenna near power lines is dangerous. Each year hundreds of people are killed or injured while attempting to install or dismantle an antenna.

Tips to protect your house and contents from lightning:  
[http://www.lightningsafety.com/nlsi\\_lhm/IEEE\\_Guide.pdf](http://www.lightningsafety.com/nlsi_lhm/IEEE_Guide.pdf)

## Table of Contents

---

Introduction .....	4
Included Contents .....	4
Compatibility & Features .....	5
Windows 7 -10 Installation .....	5
FAQs and WiFi Troubleshooting .....	8
Optional Accessories.....	10

## Introduction

---

Congratulations! You have selected an exceptional Outdoor WiFi receiver.

The CC X Mile has superior performance and the ability to receive WiFi over great distances. It's body is made solidly and should provide many years of service. Please take a few moments to read over this quickstart guide to ensure fast installation and best performance.

## Included Contents

---

CC X Mile  
Assembly Guide  
30 ft. USB Cable  
Weatherproof Coaxial Sealant  
Silicone Grease

Copyright © 2011-2019 by C. Crane  
Fortuna, CA 95540  
Phone: 1-800-522-8863 Web: [ccrane.com](http://ccrane.com)

All rights reserved. No part of this booklet may be reproduced, in any form or means whatsoever, without permission in writing from C. Crane.

## Compatibility and Features

### **Compatibility**

- Windows 7™ through Windows 10™
- USB 1.1 - 2.0 interface
- 802.11b, 802.11g, and 802.11n
- WEP, WPA, and WPA2 encryption
- Wireless Routers up to 2.4 GHz  
(**Note:** Not compatible with 5 GHz Networks)

### **Features**

- Long distance outdoor WiFi reception
- Up to 150 Mbps file transfer rate
- Rugged aluminum body
- Easy connect USB pigtail
- 30 ft. USB cable with dual connectors

## Windows 7–10 Installation

### **Windows 8/10 users:**

These operating systems do not require additional software. Just plug the CC X Mile into the computer, and it will automatically install.

### **Windows 7 users:**

This operating system needs to download the software from the internet. We recommend having an internet connection before plugging the CC X Mile into your computer. The driver will automatically install from the internet when plugged in.

Note: A full software utility (and drivers) can be downloaded from [www.ccrane.com](http://www.ccrane.com) but it is NOT REQUIRED. You may also request a software CD by calling C. Crane at 1-800-522-8863.

Windows is a registered trademark of Microsoft Corporation in the United States and other countries.

## Windows 7-10 Installation

---

If only one USB port is available, plug in the main USB cable connector (not the optional Power Boost connector).

USB cables plug in just one way and should not be forced in.

**Note:** When connecting the CC X Mile, please be sure that it is tightly connected.

**For Boat and Extended Outdoor Use:** We recommend wrapping coaxial sealant around the connection for more protection against corrosion. (See the included Assembly Guide).



### Connecting to a WiFi Site

Access the built-in Windows wireless utility using the icon that shows up in the clock task bar. For each Windows operating system, the utility works differently. Please follow the directions below.

#### Windows 7/8

1. Left click the icon below. A small window will pop up showing wireless networks that can be detected.



**Note:** If you have built-in WiFi in your computer, you may have to scroll down the list of networks to see the additional ones that your new antenna can detect. Successful connection to a wireless network usually requires a minimum of 2 bars of signal.



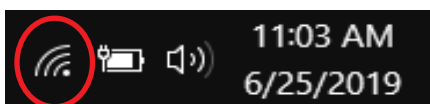
## Windows 7–10 Installation

---

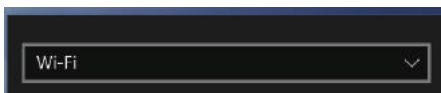
2. Left click the network of your choice from the list, then left click "**Connect**".
3. Once connected to the network, you will be able to access the internet using your default web browser (provided that the network offers internet access).

**Windows 10** – Driver installation may not be necessary. Plug the antenna into the computer and the Windows 10 drivers should automatically install this device.

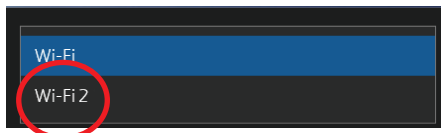
1. Left click on the icon below.



2. A window will appear with a pull down option next to the word WiFi.



3. Click on the drop down arrow and select WiFi 2 (or another number).



4. You should now see networks listed for this device.
5. Left click the network of your choice from the list, then left click "**Connect**".
6. Once connected to the network, you will be able to access the internet using your default web browser (provided that the network offers internet access).

## **FAQs and WiFi Troubleshooting**

---

- Q. My computer is not showing that the antenna is not plugged in. What is wrong?**
- A. Check the connection between the antenna and the cable to be sure they are tightly connected. If only one USB port is available, make sure to use the main USB cable connector, not the optional Power Boost connector (single loose connector).
- Q. My computer shows that the antenna is connected but when I try to use my Internet browser I am unable to view anything. What should I do?**
- A. You may not have a strong enough WiFi connection. Successful connection to a wireless network usually requires a minimum of 2 bars of signal. If the signal is low, you can try relocating or repositioning the antenna with a better line-of-sight view to the WiFi source; or the wireless network does not offer internet service; or a firewall/virus protection is preventing access.
- Q. It does not improve my WiFi reception. Is there something I can do to make it work better?**
- A. Be sure that the antenna is positioned vertically in a location that is non-obstructed to the WiFi source. Mount your antenna outside and up high for best reception. If your desired WiFi network still shows a weak signal, then contact us at: [customerservice@ccrane.com](mailto:customerservice@ccrane.com) or call (800) 522-8863.
- Q. Can I use a passive USB extension cable to add on to the existing length of cable that came with the CC X Mile?**
- A. No, the CC X Mile should not be connected to an additional passive USB extension cable. Please use the 30 ft. USB cable that came with the antenna. Please contact C.Crane for further information.



## **FAQs and WiFi Troubleshooting**

---

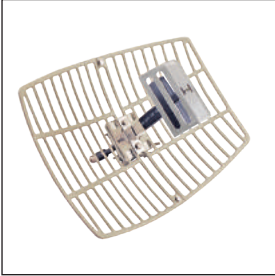
- Q. My computer has an internal WiFi antenna; is it necessary to disable it before installing the software and the CC X Mile?**
- A. It is not required, but it is recommended. If both WiFi connections are going at the same time, it will require more power from your computer and create extra heat. Usually there is a button, switch, or key on a laptop that disables the built-in WiFi device.
- Q. Can I use the antenna with my iPad® or iPhone® to increase my WiFi reception?**
- A. No. The CC X Mile requires installation of software drivers. The iPad® and iPhone® are not capable of installing software drivers. Please check [www.ccrane.com](http://www.ccrane.com) for other solutions.
- Q. Is there a location on the web to download a copy of the software or to review the FAQ's for this product?**
- A. Yes, for the **CC X Mile Omni Receiver** go to: [www.ccrane.com/XMile8](http://www.ccrane.com/XMile8)  
For the **CC X Mile Extended Long Range Receiver** go to: [www.ccrane.com/XML15](http://www.ccrane.com/XML15)

## Optional Accessories

---

***Available at [ccrane.com](http://ccrane.com) or call: 1-800-522-8863***

---



### **Point To Point WiFi Antenna**

This 15dBi outdoor antenna is the best we have tested for point to point applications over long distances. In our tests, it provided a much stronger signal than other Yagis claiming the same gain, and at half the size.



### **High-Gain 8dBi 2.4 GHz Outdoor WiFi Antenna**

Send and receive WiFi clearly, without having to worry about your mid-range signal being dropped. This high-gain antenna is omni-directional and for outdoor use. Powerful, rugged, and weatherproof!



### **Coax Seal 10-Inch Roll**

Provides a long-lasting, waterproof seal for coaxial cable fittings and many other connections. Use for TV and radio antennas, satellite dishes, CATV, wireless networks, marine electronics, feed lines, radar and microwave installations, and many other applications.



# **FCC Interference Statement and Safety**

---

## **Federal Communication Commission Interference Statement**

This equipment has been tested and found to comply with the limits for a Class B digital device, pursuant to Part 15 of FCC Rules. These limits are designed to provide reasonable protection against harmful interference in a residential installation.

Operation is subject to the following two conditions:

1. This device may not cause harmful interface, and
2. This device must accept any interface received, including interface that may cause undesired operation. This equipment generates, uses, and can radiate radio frequency energy and, if not installed and used in accordance with the instructions, may cause harmful interference to radio communications. However, there is no guarantee that interference will not occur in a particular installation. If this equipment does cause harmful interference to radio or television reception, which can be determined by turning the equipment off and on, the user is encouraged to try to correct the interference by one or more of the following measures:
  - a. Reorient or relocate the receiving antenna.
  - b. Increase the separation between the equipment and receiver.
  - c. Connect the equipment into an outlet on a circuit different from that to which the receiver is connected.
  - d. Consult the dealer or an experienced radio technician for help.

Changes or modifications not expressly approved by the manufacturer could void the user's authority to operate the equipment.

### **CAUTION:**

1. **To comply with FCC RF exposure compliance requirements, a separation distance of 20 cm (about 8 inches must be maintained between the antenna of this device and all persons.**
2. This transmitter must not be co-located or operating in conjunction with any other antenna or transmitter.

FCC ID: TKZAWUHN2408

THIS DEVICE COMPLIES WITH PART 15 OF THE FCC RULES.

OPERATION IS SUBJECT TO THE FOLLOWING TWO CONDITIONS:

- (1) THIS DEVICE MAY NOT CAUSE HARMFUL INTERFERENCE, AND
- (2) THIS DEVICE MUST ACCEPT ANY INTERFERENCE RECEIVED, INCLUDING INTERFERENCE THAT MAY CAUSE UNDESIRE OPERATION.